



jordanfishwick

Warwick Road
Chorlton



Warwick Road Chorlton M21 0AX

£1,250 Per Calendar Month



The Property

**** AVAILABLE NOW **** This two bedroom two bathroom ground floor apartment is in a converted house of six apartments. Located a short walk from the Metro Link, bus stops, shops and the vibrant Chorlton village centre. The property is fully furnished and comprises briefly: Entrance hall, lounge, fully fitted kitchen, en-suite master bedroom and second double bedroom, family bathroom. Fully furnished, double glazing and led lighting throughout. The property is ideal for young professionals and also available to 2 sharers. Off road parking available on a first come first serve basis.

*****To arrange a viewing please call 0161 860 4444 *****

Directions

- Council Tax Band A - EPC E
- 2 Bedroom
- 2 Bathroom
- Close to Metro links & all amenities
- Parking available
- Furnished
- Available Now

Postcode - M21 0AX

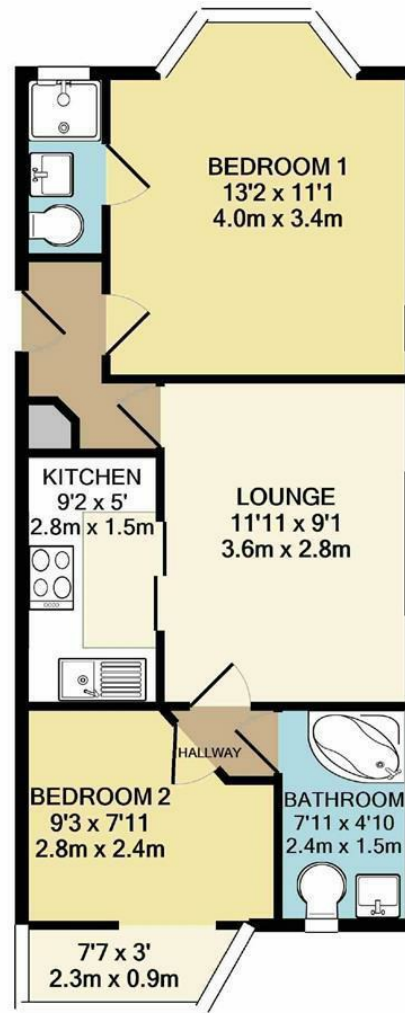
EPC Rating - E

Floor Area - sq ft

Local Authority - Manchester

Council Tax - A





TOTAL APPROX. FLOOR AREA 471 SQ.FT. (43.7 SQ.M.)
Measurements are approximate. Not to scale. Illustrative purposes only
Made with Metropix ©2020



These particulars are believed to be accurate but they are not guaranteed and do not form a contract. Neither Jordan Fishwick nor the vendor or lessor accept any responsibility in respect of these particulars, which are not intended to be statements or representations of fact and any intending purchaser or lessee must satisfy himself by inspection or otherwise as to the correctness of each of the statements contained in these particulars. Any floorplans on this brochure are for illustrative purposes only and are not necessarily to scale.

Offices at: Offices at Chorlton, Didsbury, Disley, Hale, Glossop, Macclesfield, Manchester Deansgate, Manchester Whitworth Street, New Mills, Sale, Wilmslow and Withington

410-412 Barlow Moor Road, Chorlton, Manchester, M21

01618604444^{8AD}

chorlton@jordanfishwick.co.uk
www.jordanfishwick.co.uk